

# INSTALLATION INSTRUCTIONS CRASH RAIL SYSTEMS

## CRB-6 & CRC-6

### STORAGE, HANDLING & ENVIRONMENTAL CONDITIONS:

1. All materials shipped unassembled. Store vertically or on flat horizontal surface.
2. Begin installation only after finish construction has been completed and building interior has been within temperature range intended for continued use for at least 24 hours. Cut vinyl and aluminum components to fit only after they have been at temperature intended for continued use for 24 hours.

### INSTALLATION:

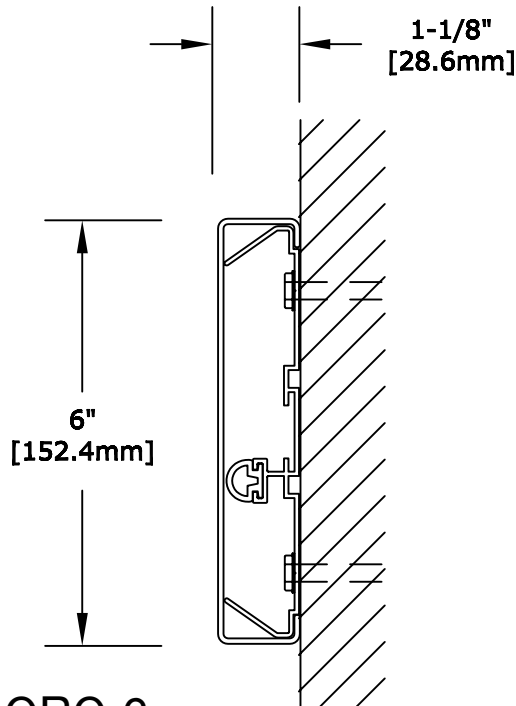
1. General: Carefully measure and mark all field-cuts and field- drilled holes to achieve properly supported, level installation with all joints neat and hairline tight.
2. Measure and mark top of rail and rail system centerline on wall or partition. Locate system centerline 3" [76.2mm] below line representing top of rail.
3. Measure and mark horizontal centerlines of retainer fasteners on wall or partition 2" [50.8mm] above and below system centerline.
4. Measure and mark locations of all vertical joints on wall or partition. Be sure to mark locations of joints that will be exposed in final installation, including joints between cover and returns, between cover and corners, and between abutting cover lengths, if any.
5. Measure and mark vertical centerlines of retainer fasteners on wall or partition 32" [812.8mm] O.C. max., unless otherwise specified or shown, and at distances from cover ends and butt joints as shown (see Standard Plan Detail).
6. Locate retainer fastener holes by drawing a small circle around each intersection of a horizontal retainer fastener centerline and a vertical retainer fastener centerline. Use level to verify that top and bottom holes align vertically.
7. Measure and mark fastener holes for returns and corners on wall or partition. Note: these holes will NOT align with horizontal, retainer fastener centerlines. Hold each return and corner unit against wall or partition so that top of unit aligns precisely with line indicating top of rail, and so that face of unit cover aligns precisely with line indicating cover end, carefully mark centers of factory-molded holes on wall or partition. Use level to verify that top and bottom holes for each unit will align vertically.
8. Measure and cut retainer lengths. Use longest practical lengths to minimize number of joints. Carefully cut to achieve hairline joints between abutting lengths. Verify that cut lengths conform exactly with lengths marked on wall or partition.
9. Pre-drill fastener holes in wall or partition at locations marked. Make hole diameter as small as possible, allowing for fasteners. For most drywall applications, we recommend 1/4"-20 bolts and 1/4" size BB strap-type Toggler brand toggles by Mechanical Plastics. For most masonry applications, we recommend 1/4" lag screws and Toggler brand "alligator" anchors by Mechanical Plastics.
10. Pre-drill fastener holes in retainer lengths to align with holes in wall or partition. Make hole diameter as small as possible, allowing for fasteners.
11. Secure retainer, returns and corners to wall or partition. Assemble fasteners, insert through holes in retainer, returns, corners, and into holes in wall or partition, and secure per fastener manufacturer's printed instructions. Note: For CRB-6 installation only: make sure to install round 5/16" spacers behind aluminum retainer and all return or corner pieces.
12. Install retainer cushion by snapping it into place between flanges on retainer clips. Retainer cushion should extend entire length of cover, from face of return (or corner) to face of return (or corner).
13. Install cover. Measure and cut cover lengths to fit between returns and corners exactly. Use longest practical lengths to minimize number of joints. Do not align cover joints directly over aluminum cover joints. Secure cover to retainer by hooking over top of retainer and snapping over retainer bottom.
14. Use mild detergent to clean soiled surface. Do not use powdered cleansers, as they may leave residue embedded in cover surface.



151 FIFTH AVE. NW SUITE J ST. PAUL, MN 55112-3268  
TOLL-FREE 800.521.1826 TEL 651.631.1607 FAX 651.631.0251

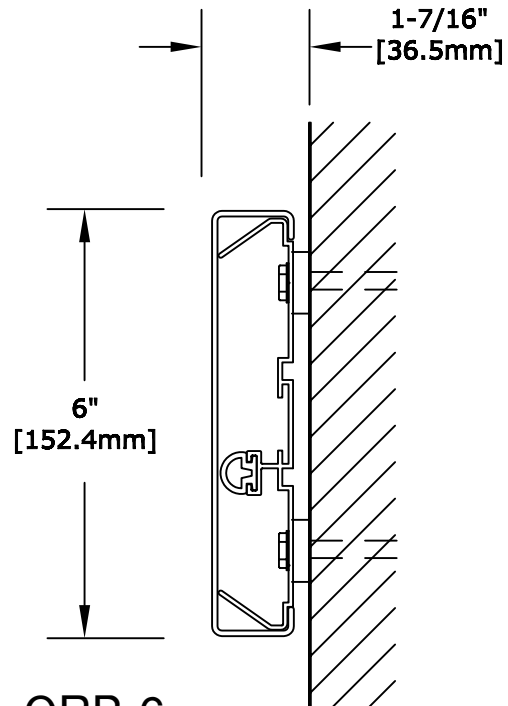
# PARTS LIST

## CRB-6 CRC-6



**CRC-6**

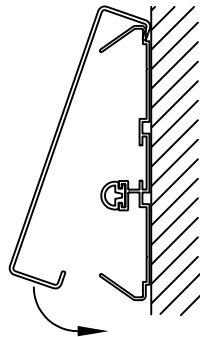
- ALUMINUM RETAINER - #A063 CONT.
- VINYL RETAINER CUSHION - #V055
- VINYL ACRYLIC COVER - #V112
- L.H. END RETURN - #CRC-6CLR
- R.H. END RETURN - #CRC-6CRR
- OUTSIDE CORNER - #CRC-6COS
- #8 X 1/2" S.M.S. - #A300



**CRB-6**

- ALUMINUM RETAINER - #A063 CONT.
- VINYL RETAINER CUSHION - #V055
- VINYL ACRYLIC COVER - #V112
- L.H. END RETURN - #CRS-6CLR
- R.H. END RETURN - #CRS-6CRR
- OUTSIDE CORNER - #CRS-6COS
- #8 X 1/2" S.M.S. - #A300 5/16"
- NYLON SPACER CORNER BOX - #M203

## COVER INSTALLATION



1. HOOK OVER TOP OF RETAINER.
2. ROTATE DOWNWARD, PUSHING FIRMLY TO SNAP OVER RETAINER

# ASSEMBLY DRAWING

## CRB-6 & CRC-6

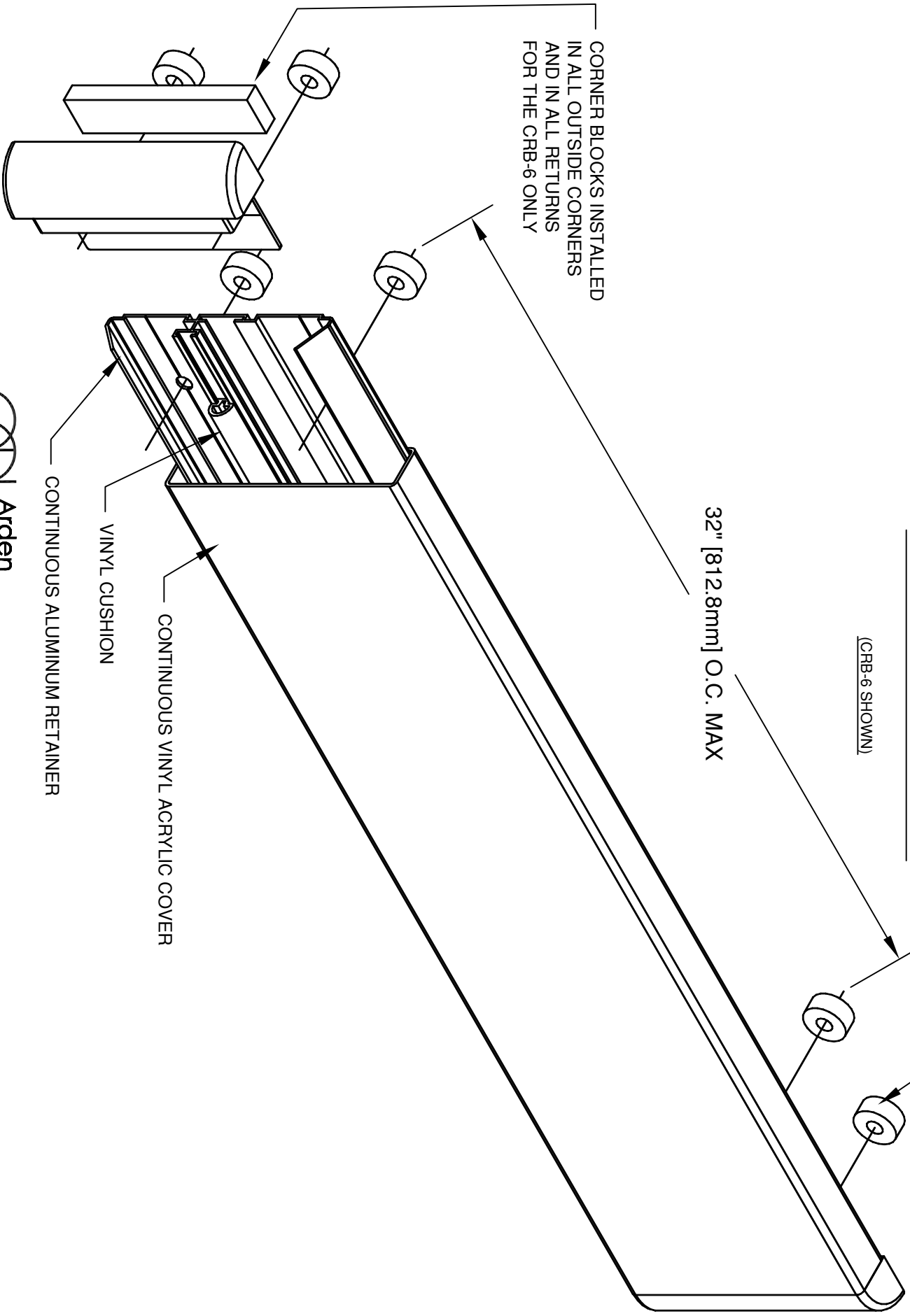
(CRB-6 SHOWN)

32" [812.8mm] O.C. MAX

SPACERS FOR  
CRB-6 ONLY (TYP)

CORNER BLOCKS INSTALLED  
IN ALL OUTSIDE CORNERS  
AND IN ALL RETURNS  
FOR THE CRB-6 ONLY

CONTINUOUS VINYL ACRYLIC COVER  
VINYL CUSHION  
CONTINUOUS ALUMINUM RETAINER

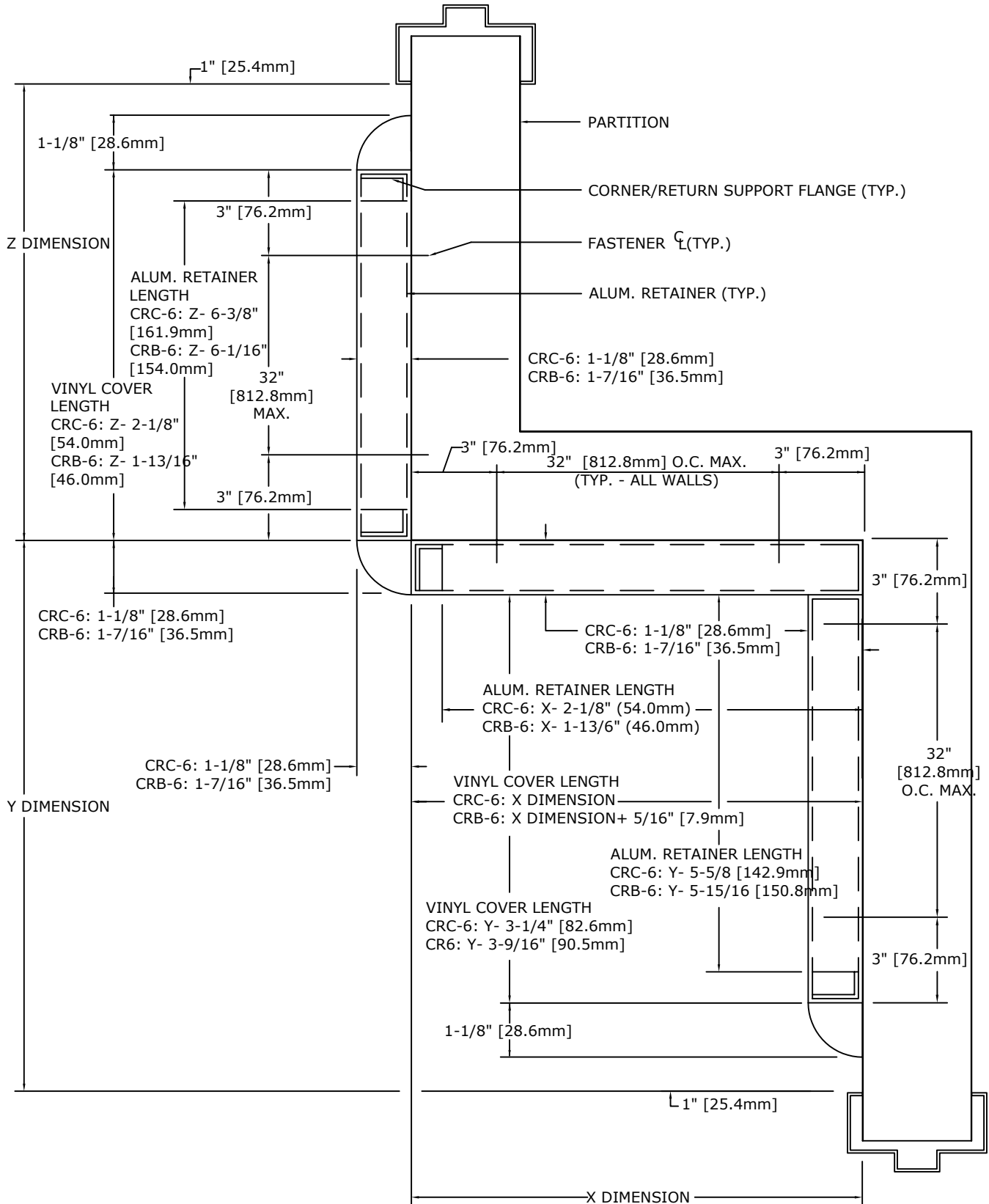


Arden  
Architectural  
Specialties, Inc.™

151 FIFTH AVE. NW SUITE 3 ST. PAUL, MN 55112-3266  
TOLL-FREE 800.521.1826 TEL. 651.631.1607 FAX 651.631.0251

# STANDARD PLAN DETAIL

## CRB-6 & CRC-6

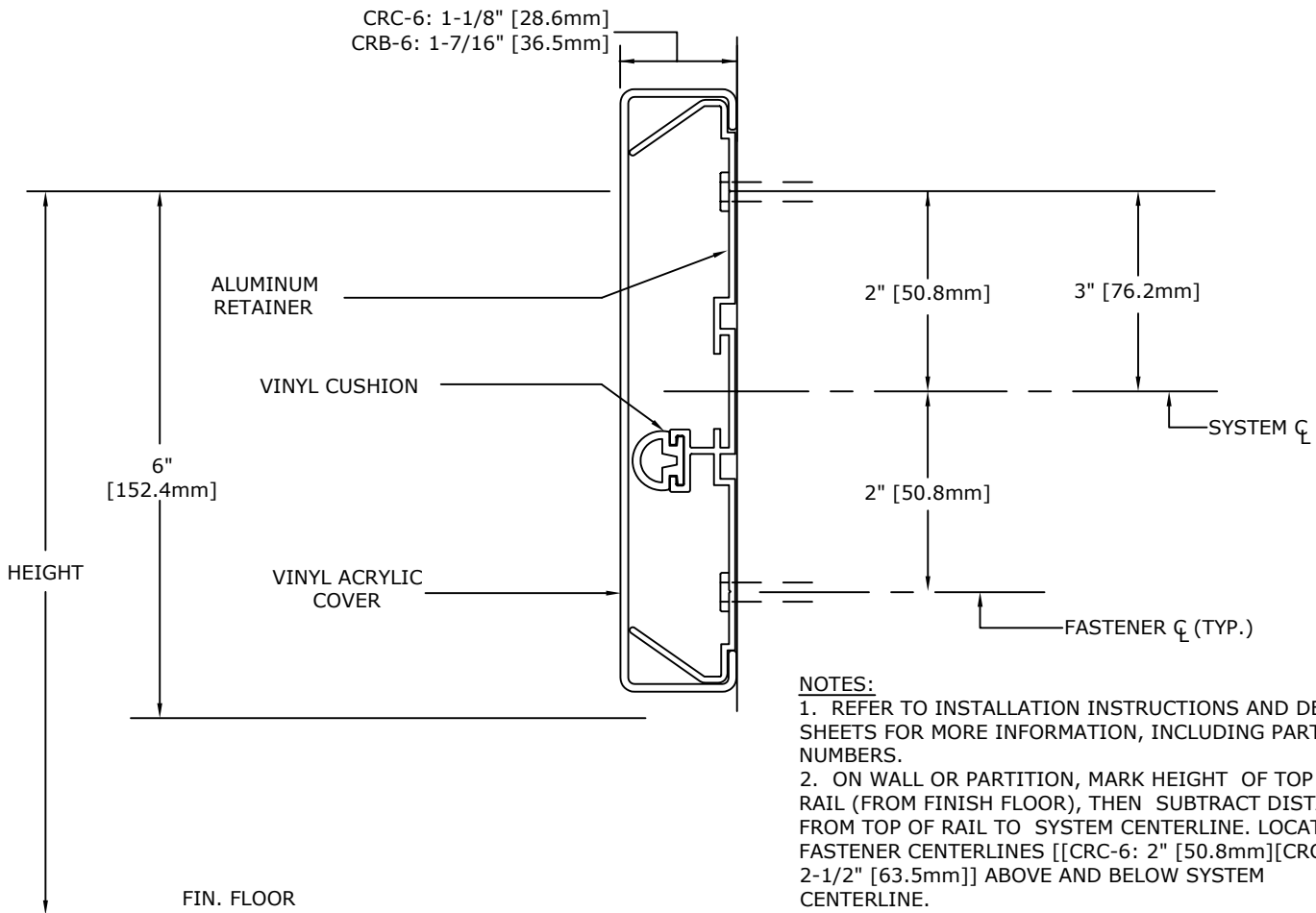


**NOTE:**  
LOCATE RETAINER FASTENERS 6" [152.4mm] O.C.  
MAX. FROM SPLICE JOINTS BETWEEN ABUTTING  
RETAINER SECTIONS, IF ANY.



151 FIFTH AVE. NW SUITE J ST. PAUL, MN 55112-3268  
TOLL-FREE 800.521.1826 TEL 651.631.1607 FAX 651.631.0251

# FASTENER HEIGHT CRB-6 & CRC-6



- NOTES:**
- REFER TO INSTALLATION INSTRUCTIONS AND DETAIL SHEETS FOR MORE INFORMATION, INCLUDING PART NUMBERS.
  - ON WALL OR PARTITION, MARK HEIGHT OF TOP OF RAIL (FROM FINISH FLOOR), THEN SUBTRACT DISTANCE FROM TOP OF RAIL TO SYSTEM CENTERLINE. LOCATE FASTENER CENTERLINES [[CRC-6: 2" [50.8mm]][CRC-8: 2-1/2" [63.5mm]] ABOVE AND BELOW SYSTEM CENTERLINE.

**IMPORTANT:** USER SHALL VERIFY CONFORMANCE OF ALL CONSTRUCTIONS SHOWN WITH LOCAL CODES AND WITH REQUIREMENTS OF METAL STUD MANUFACTURER FOR RATINGS. FASTENERS AND PARTITION COMPONENTS NOT BY ARDEN ARCHITECTURAL SPECIALTIES, INC.

## TYPICAL FASTENING CONDITIONS SHOWN BELOW

1 LAYER GYP. BD.	2 LAYERS GYP. BD.	MASONRY	GYP. BD. & MASONRY
1/4"-20 X 2-3/4" BOLT AND TYPE BB TOGGLER BY MECHANICAL PLASTICS	1/4"-20 X 2-3/4" BOLT AND TYPE BB TOGGLER BY MECHANICAL PLASTICS	1/4" X 3" LAG SCREW AND TYPE AF6 ALLIGATOR ANCHORS BY MECHANICAL PLASTICS	1/4" X 3" LAG SCREW AND TYPE AF6 ALLIGATOR ANCHORS BY MECHANICAL PLASTICS
QTY:	QTY:	QTY:	QTY:

**SPECIFICATION:**

**GENERAL:** FURNISH AND INSTALL CRASH RAIL SYSTEM(S) BY ARDEN ARCHITECTURAL SPECIALTIES, INC., AS SHOWN AND SPECIFIED.

**INSTALLATION:** SECURE TO WALL OR PARTITION IN ACCORDANCE WITH MANUFACTURER'S PRINTED INSTRUCTIONS. USE FASTENERS DESIGNED AND APPROVED FOR PURPOSE INTENDED, SPACED 32 INCHES [812.8mm] O.C. MAX, UNLESS SPECIFIED OTHERWISE. INSTALL SYSTEM IN ACCORDANCE WITH ALL CODES HAVING JURISDICTION.



151 FIFTH AVE. NW SUITE J ST. PAUL, MN 55112-3268  
TOLL-FREE 800.521.1826 TEL 651.631.1607 FAX 651.631.0251