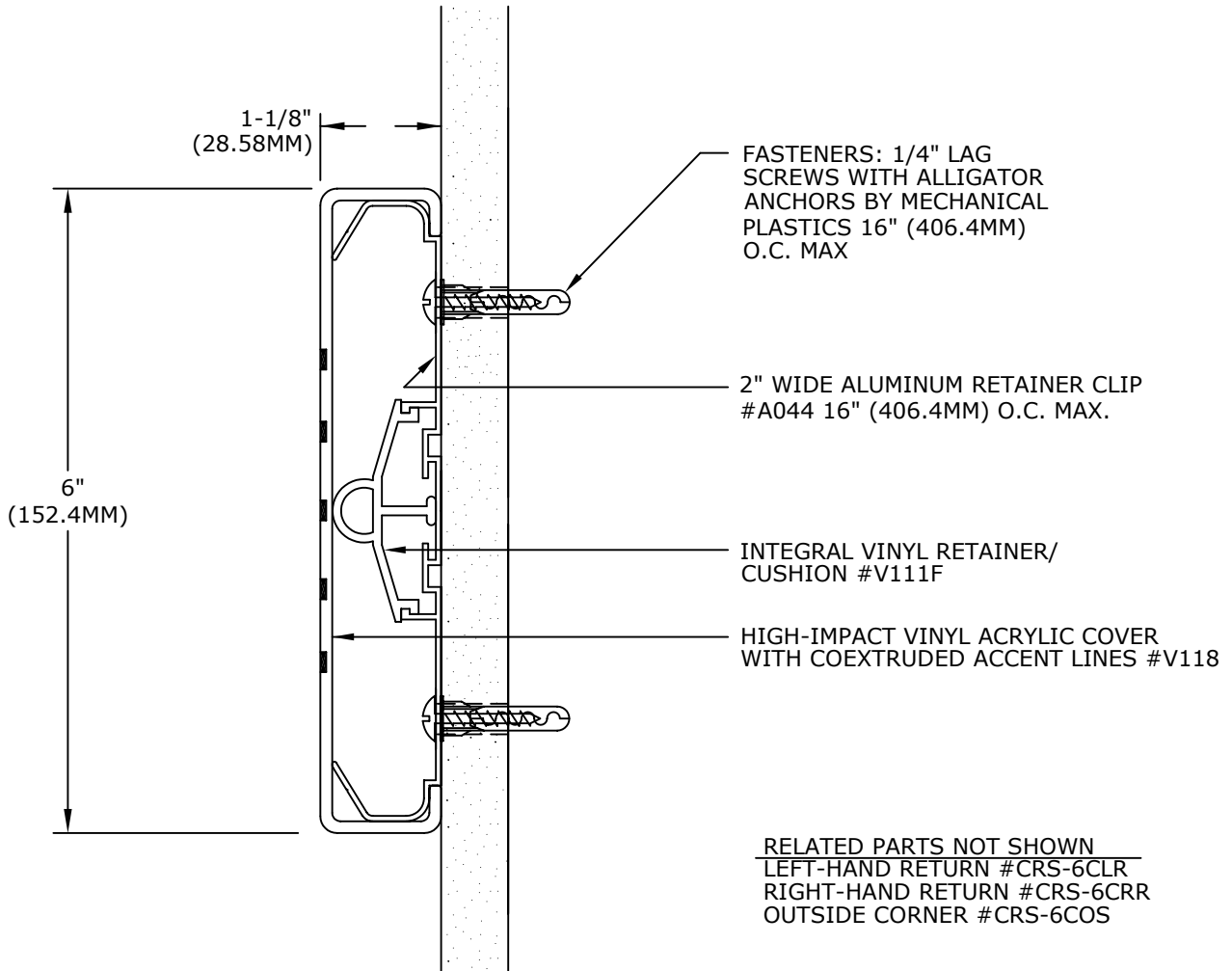


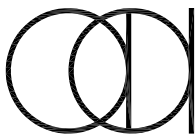
Wallwear® Integrated Wall Protection Systems



CRASH RAIL CRSD-6

IMPORTANT: USER SHALL VERIFY CONFORMANCE OF ALL CONSTRUCTIONS SHOWN WITH LOCAL CODES AND WITH REQUIREMENTS OF METAL STUD MANUFACTURER FOR RATINGS. FASTENERS AND PARTITION COMPONENTS NOT BY ARDEN ARCHITECTURAL SPECIALTIES, INC.

CRASH RAILS		DATE:	SCALE:
<u>GENERAL SPECIFICATION</u> RETAINER: ALUMINUM ALLOY TYPE 6063-T5, MILL FINISH .062" [1.57mm] THICK COVER: HIGH-IMPACT VINYL ACRYLIC, IN ACCORDANCE WITH ASTM D 4226 AND ASTM D 256, .078" [1.98mm] THICK CONTINUOUS LENGTH AVAILABLE: 20' [6.1M] MAXIMUM		PROJECT: ARCHITECT: CONTRACTOR: REPRESENTATIVE:	



Arden
Architectural
Specialties, Inc.™

151 FIFTH AVE. NW SUITE J ST. PAUL, MN 55112-3268
TOLL-FREE 800.521.1826 TEL 651.631.1607 FAX 651.631.0251

CUSTOMER:	CUST. NO:	JOB NO:	SHEET OF
-----------	-----------	---------	----------