

INSTALLATION INSTRUCTIONS CORNER GUARD SYSTEMS CGF-2SEW, -3SEW, -2REW, -3REW

STORAGE, HANDLING, & ENVIRONMENTAL CONDITIONS:

1. All materials shipped unassembled. Store vertically or on flat horizontal surface.
2. Begin installation only after finished construction has been completed and building interior has been within temperature range intended for continued use for at least 24 hours. Cut vinyl and aluminum components to fit only after they have been at temperature intended for continued use for 24 hours.

INSTALLATION:

1. Field-verify exact retainer lengths for height of wall or partition.
2. Field-verify that 1/2" clearance for drywall set back.
3. Install vinyl strip. Trim Perpetuwall® strip to required finished height. It should be the same height as the aluminum retainer. Center the strip on the end of the wall or partition and attach with adhesive provided.
4. Install retainers. Moisten inside of aluminum base molding with spray lubricant to facilitate installation of aluminum base molding, and slide onto one end of aluminum retainer. This end will sit on the floor. Secure retainer to wall or partition with fasteners inserted through factory holes in retainer legs. For most drywall applications, we recommend #6 drywall screws, fastened through gypsum board to studs. For most masonry applications, we recommend #6 drywall screws and Toggler brand " alligator " anchors, size A5, by Mechanical Plastics.
5. Install cover. Field-verify that the cover lengths fit exactly between top of aluminum base molding and top of system, as shown or specified. Use one continuous length of vinyl acrylic cover per corner. Secure to retainer by hooking over lip on one retainer leg and snapping over lip on other retainer leg.
6. Cleaning: Use mild detergent to clean soiled surfaces. Do not use powdered cleansers, as they leave a residue on cover surface.

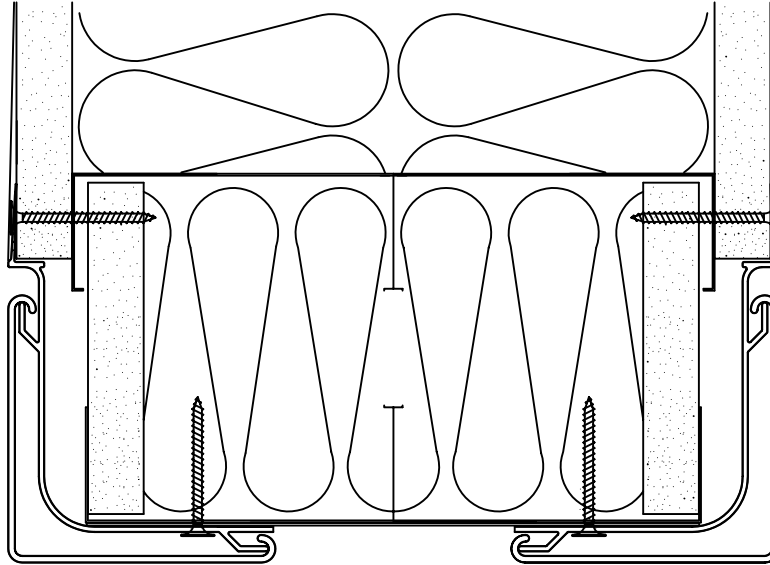


151 FIFTH AVE. NW SUITE J ST. PAUL, MN 55112-3268
TOLL-FREE 800.521.1826 TEL 651.631.1607 FAX 651.631.0251

PARTS LIST

CGF-2S-EW, -3S-EW, -2R-EW, -3R-EW

PAGE 2 OF 4
CGF-2SEW
CGF-2REW
CGF-3SEW
CGF-3REW



PARTS LIST

ALUMINUM RETAINER 2" A040

ALUMINUM RETAINER 3" A041

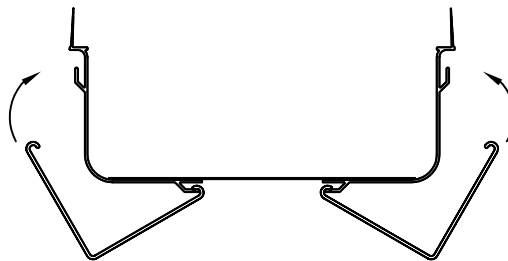
VINYL ACRYLIC COVER 2": V106 (2S), V108 (2R)

VINYL ACRYLIC COVER 3": V107 (3S), V109 (3R)

ALUMINUM COVE BASE 2": A027 (2S), A029 (2R)

ALUMINUM COVE BASE 3": A028 (3S), A030 (3R)

COLOR MATCHED PERPETUWALL® INSERT OF VARIABLE WIDTH



1. HOOK OVER ONE RETAINER LIP.
2. ROTATE SIDEWARD, PUSHING FIRMLY TO SNAP OVER OTHER RETAINER LIP.

ASSEMBLY DRAWING

CGF-2SEW, CGF-2REW, CGF-3SEW, CGF-3REW

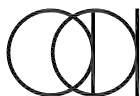
CONTINUOUS ALUMINUM RETAINER

FASTENERS: DRYWALL
SCREWS (OR FLAT-HEAD
SCREWS WITH
ALLIGATOR- TYPE
EXPANSION SHIELDS BY
MECHANICAL PLASTICS)
16" [406.4mm] O.C. MAX.
STAGGERED EACH SIDE.

HIGH IMPACT
VINYL ACRYLIC
COVER

COLOR-MATCHED
PERPETUWALL INSERT
OF VARIABLE WIDTH

ALUMINUM BOTTOM COVES

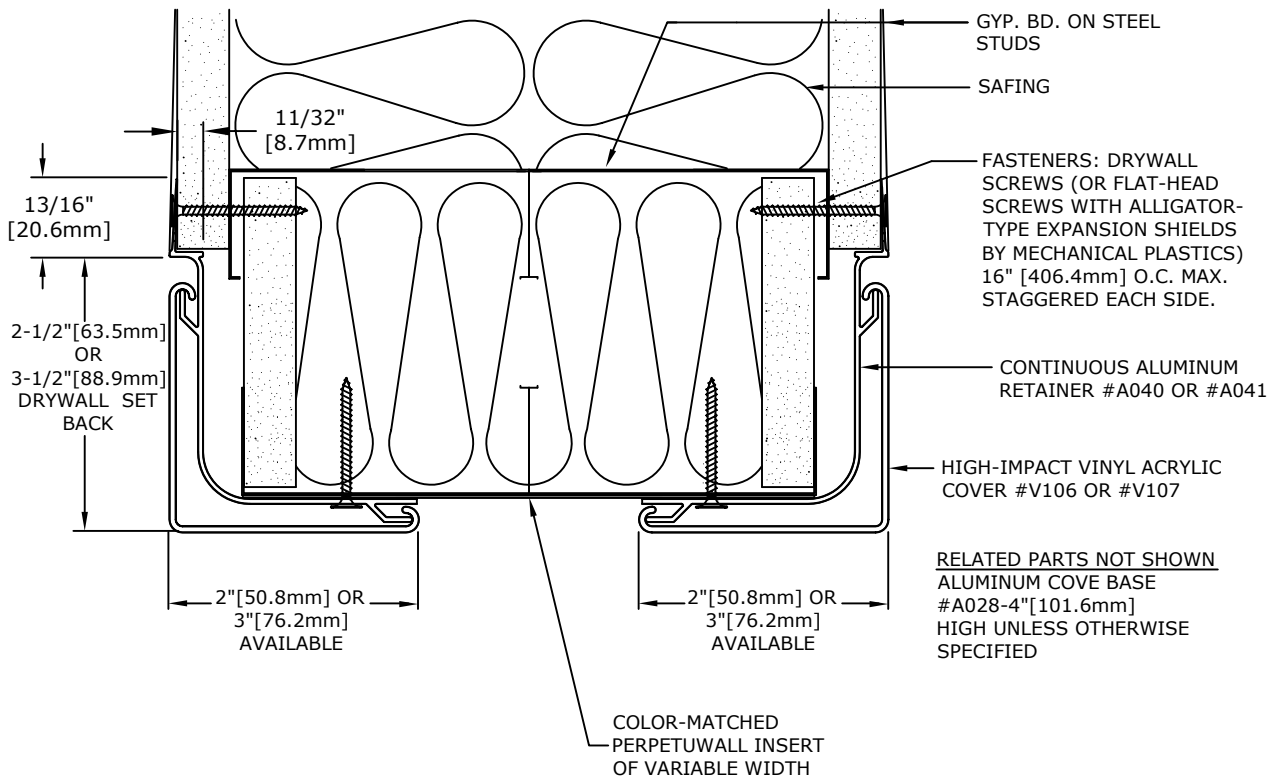


Arden
Architectural
Specialties, Inc.™

151 FIFTH AVE. NW SUITE J ST. PAUL, MN 55112-3268
TOLL-FREE 800.521.1826 TEL 651.631.1607 FAX 651.631.0251

PLAN VIEW

CGF-2S-EW, -3S-EW, -2R-EW, -3R-EW (CGF-3S SHOWN)



NOTES:
1. REFER TO INSTALLATION INSTRUCTIONS AND
DETAIL SHEETS FOR MORE INFORMATION,
INCLUDING PART NUMBERS.

IMPORTANT: USER SHALL VERIFY CONFORMANCE OF ALL CONSTRUCTIONS SHOWN WITH LOCAL CODES AND WITH REQUIREMENTS OF METAL STUD MANUFACTURER FOR RATINGS. FASTENERS AND PARTITION COMPONENTS NOT BY ARDEN ARCHITECTURAL SPECIALTIES, INC.

TYPICAL FASTENING CONDITIONS SHOWN BELOW

<p>1 LAYER GYP. BD.</p> <p>#6 x 2" DRYWALL SCREW</p> <p>QTY:</p>	<p>2 LAYERS GYP. BD.</p> <p>#6 x 2" DRYWALL SCREW</p> <p>QTY:</p>	<p>GYP. BD. & MASONRY</p> <p>#6 X 1-1/2" S.M. SCREW AND TYPE AF5 ALLIGATOR ANCHORS BY MECHANICAL PLASTICS</p> <p>QTY:</p>
--	---	---

SPECIFICATION:

GENERAL: FURNISH AND INSTALL CORNER GUARD SYSTEM(S) BY ARDEN ARCHITECTURAL SPECIALTIES, INC., AS SHOWN AND SPECIFIED.

INSTALLATION: SECURE TO WALL OR PARTITION IN ACCORDANCE WITH MANUFACTURER'S PRINTED INSTRUCTIONS. USE FASTENERS DESIGNED AND APPROVED FOR PURPOSE INTENDED, SPACED 8 INCHES [203.2mm] O.C. MAX. STAGGERED EACH LEG OF RETAINER. INSTALL IN ACCORDANCE WITH ALL CODES HAVING JURISDICTION.



151 FIFTH AVE. NW SUITE J ST. PAUL, MN 55112-3268
TOLL-FREE 800.521.1826 TEL 651.631.1607 FAX 651.631.0251