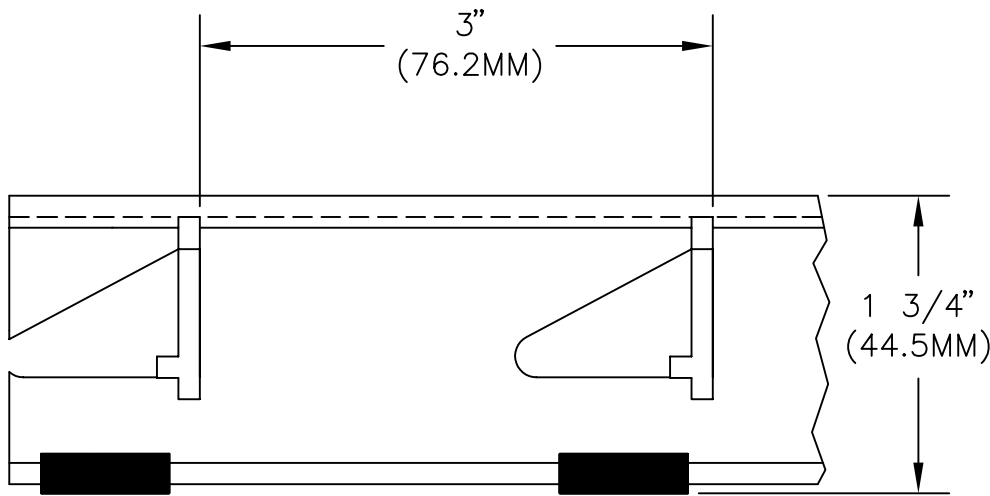


These grates have continuous I-beam tread rails and can be fabricated with curves and angles. Constructed with sturdy keylocks every three inches, thin line grates can stand up to almost any traffic. Epoxy resin grit has a high coefficient of friction to prevent slipping hazards.



DETAIL NOTES:


- 1 - Tread rails must run perpendicular to traffic direction.
- 2 - Traffic direction dimensions can only be changed in 3/4" (19.1mm) increments unless aluminum filler is attached to the frame.
- 3 - Grate dimensions allow for clearance between grate sections and frames in the width dimension.

SPECIFICATION:

GrateDesign model G-575PG thin line aluminum abrasive grate by Arden Architectural Specialties, Inc.; with 1-3/4" (44.5mm) deep, 6063-T52 aluminum alloy rails, with treads of aluminum-oxide grit, factory bonded in a 2-part epoxy coating; spaced 3/4" (19.1mm) o.c.; with keylocks spaced 3" (76.2mm) o.c.; use with [type F-1 level bed][type F-LANG large angle][type F-2 deep pit][type F-2T thin slab] frame.

Complete specifications available on our website at www.ardenarch.com.

CUST. ORDER #	ARCHITECT		
CUSTOMER	CONTRACTOR		
PROJECT	RAIL MODEL G-575PG	FRAME MODEL N/A	SCALE NTS



Arden Architectural Specialties, Inc.[™]
 151 FIFTH AVE. NW SUITE J ST. PAUL, MN 55112-3268
 TOLL-FREE 800.521.1826 TEL 651.631.1607 FAX 651.631.0251