

INSTALLATION INSTRUCTIONS FOR HRC-625

STORAGE, HANDLING & ENVIRONMENTAL CONDITIONS:

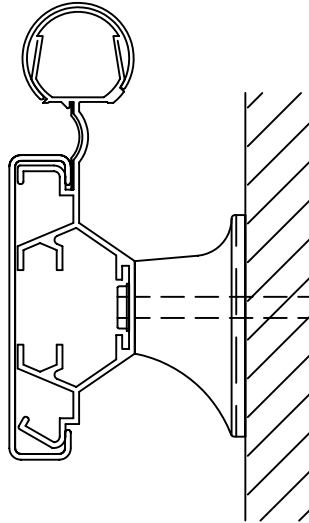
1. All materials shipped unassembled. Store vertically or on flat horizontal surface.
2. Begin installation only after finish construction has been completed and building interior has been within temperature range intended for continued use for at least 24 hours. Cut vinyl and aluminum components to fit only after they have been at room temperature intended for continued use for 24 hours.

INSTALLATION:

1. Measure and mark fastener centerline on wall or partition. Locate this centerline by subtracting 4-1/8" [104.8mm] from height of top of rail on wall or partition.
2. Measure and mark aluminum retainer ends and joints between abutting retainer lengths, if any, on wall or partition (see Standard Plan Detail).
3. Measure and mark fastener holes on wall or partition. Locate holes on fastener centerline 32" [812.8mm] O.C. max., unless otherwise specified, and at distances from retainer ends and butt joints as shown (see Standard Plan Detail).
4. Measure and cut retainer lengths. Use longest practical lengths to minimize number of joints. Carefully cut to achieve hairline joints between abutting lengths. Verify that cut lengths conform exactly with lengths marked on wall or partition.
5. Pre-drill fastener holes in wall or partition at locations marked. Make hole diameter as small as possible, allowing for fasteners. For most drywall applications, we recommend 1/4"-20 bolts and 1/4" size BB strap-type Toggler brand toggles by Mechanical Plastics. For most masonry applications, we recommend 1/4" lag screws and Toggler brand "alligator" anchors, size A6, by Mechanical Plastics.
6. Pre-drill holes in retainer lengths to align with holes in wall or partition. Make hole diameter as small as possible, allowing for fasteners.
7. Assemble retainers. Splice abutting retainer lengths, if any, using manufacturer-provided splices and screws; abut tightly to achieve hairline joints. Insert tabs on returns and corners into retainers, clamp into place, and secure with manufacturer-provided #8x1/2" sheet metal screws or 1/8" pop rivets.
8. Secure rail assemblies to wall or partition. Assemble fasteners, insert through holes in retainer and brackets and into holes in wall or partition, and secure per fastener manufacturer's printed instructions.
9. Install cover. Carefully locate cover joints so that they are not directly over retainer splices, as this can create improper alignment of adjacent cover lengths. Measure and cut cover lengths to fit between returns and corners exactly. Use longest practical lengths to minimize number of joints. Do not align cover joints directly over retainer joints. Secure cover lengths to retainer by hooking 4" square cover over retainer top and snapping over retainer bottom; by pushing 1-1/2" round cover down over the top of the retainer; and by sliding lengths of accent strip in to retainer slot from one end. Make all joints neat and hairline tight.
10. Use mild detergent to clean soiled surfaces. Do not use powdered cleaners, as they may leave a residue embedded in cover surface.

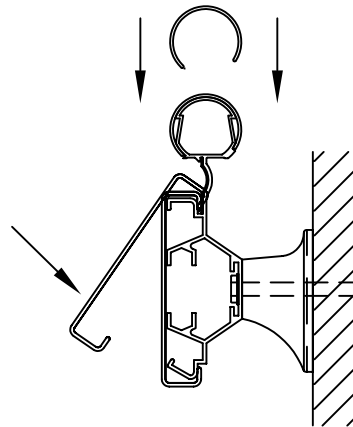
PARTS LIST

HRC-625



PARTS LIST

ALUMINUM RETAINER - #A046
VINYL ACRYLIC COVER - #V101
VINYL ACRYLIC COVER - #V105
VINYL ACRYLIC ACCENT STRIP - #V114
MOUNTING BRACKET - #M290
L.H. END RETURN - #HRC-625CLR
R.H. END RETURN - #HRC-625CRR
OUTSIDE CORNER - #HRC-625COS
ALUMINUM SPLICE PLATE - #A023
#8 X 1/2" S.M.S. - #A300

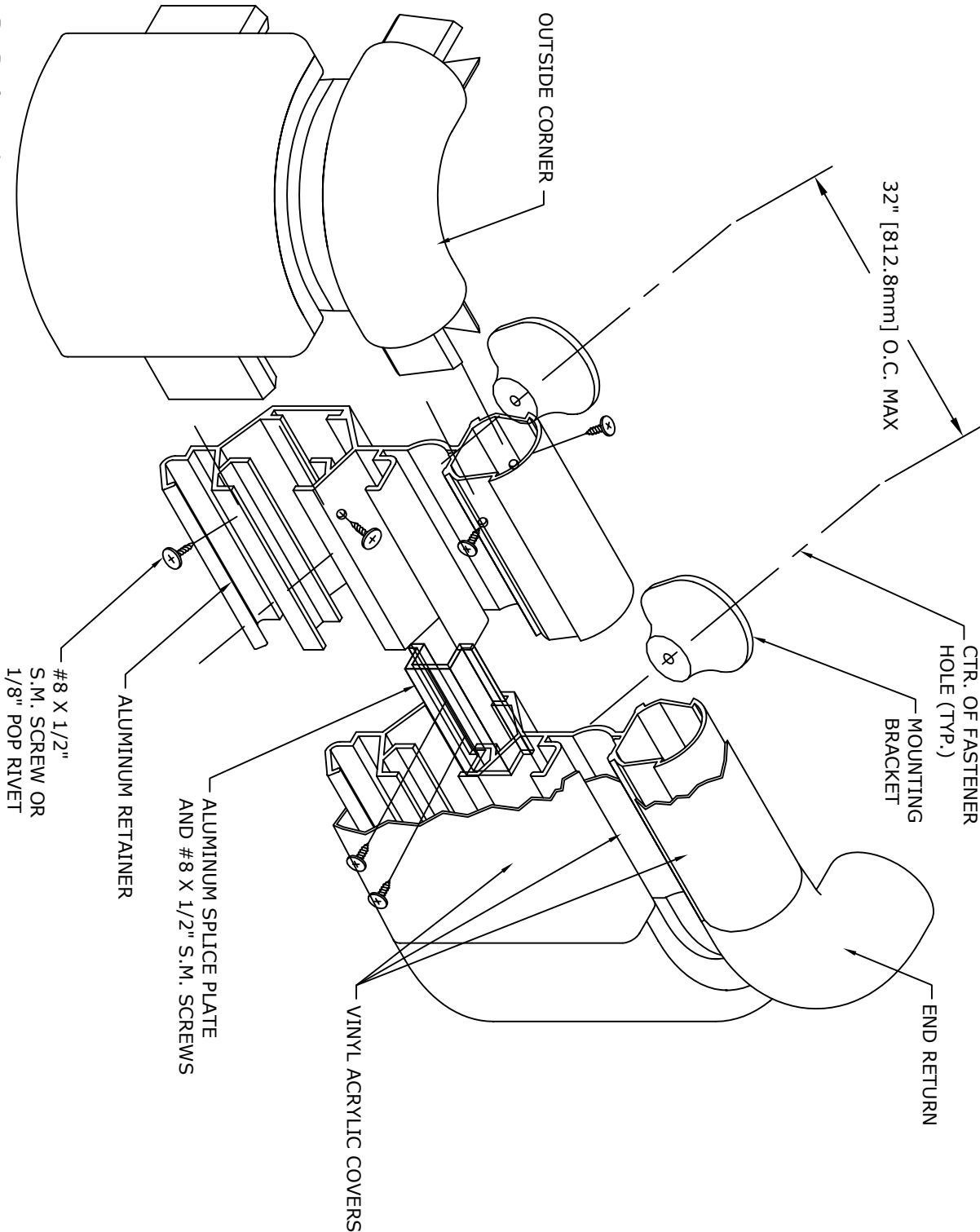


COVER INSTALLATION

1. HOOK 4" COVER OVER TOP OF LOWER SECTION.
2. ROTATE DOWNWARD, PUSHING FIRMLY TO SNAP OVER RETAINER BOTTOM.
3. PUSH 1-1/2" COVER DOWN OVER TOP OF RETAINER.
4. INSERT ACCENT STRIP IN FROM ONE END OF RETAINER.

ASSEMBLY DRAWING

HRC-625

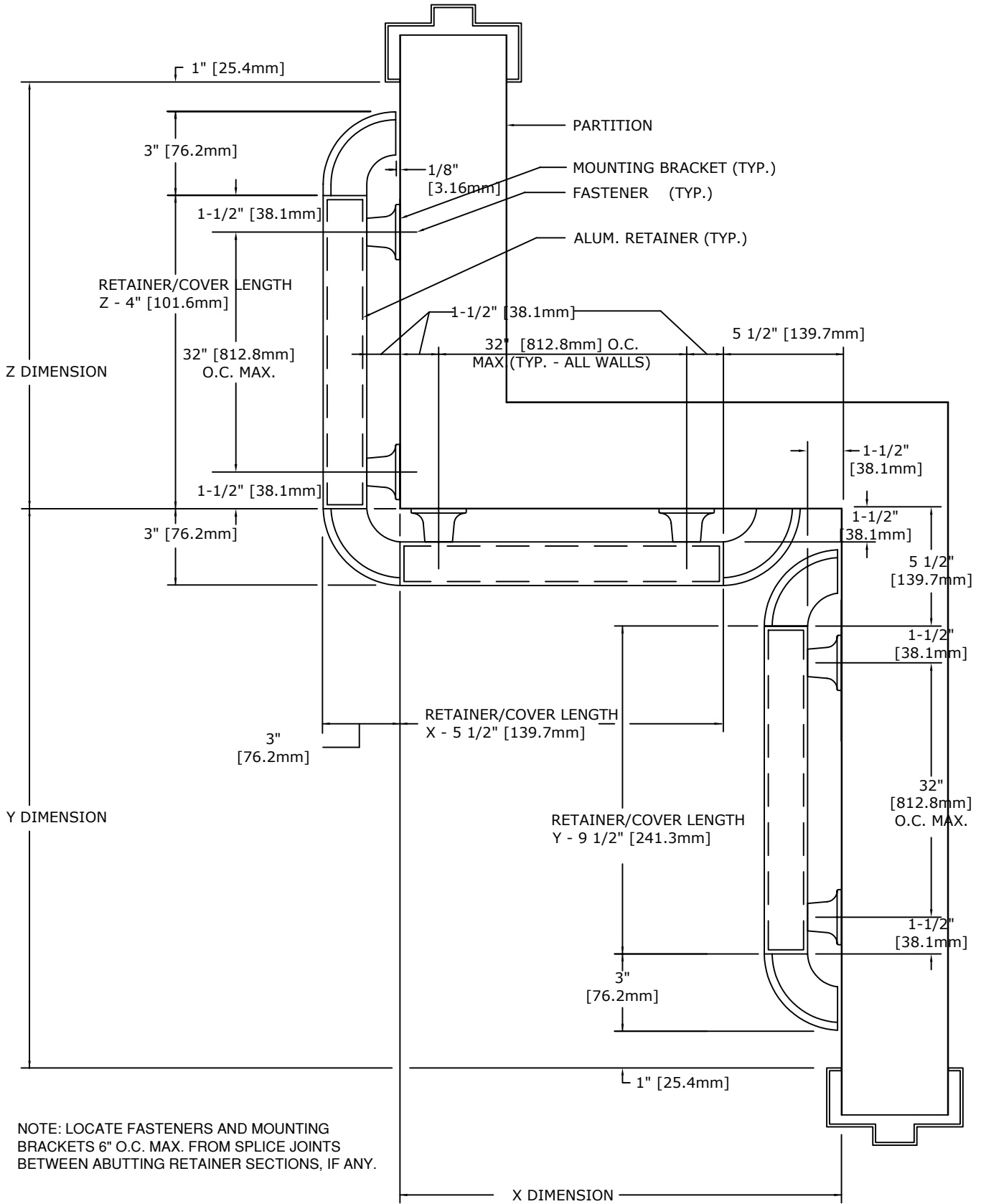


Arden
Architectural
Specialties, Inc.™

151 FIFTH AVE. NW SUITE J ST. PAUL, MN 55112-3268
TOLL-FREE 800.521.1826 TEL 651.631.1607 FAX 651.631.0251

STANDARD PLAN DETAIL

HRC-625

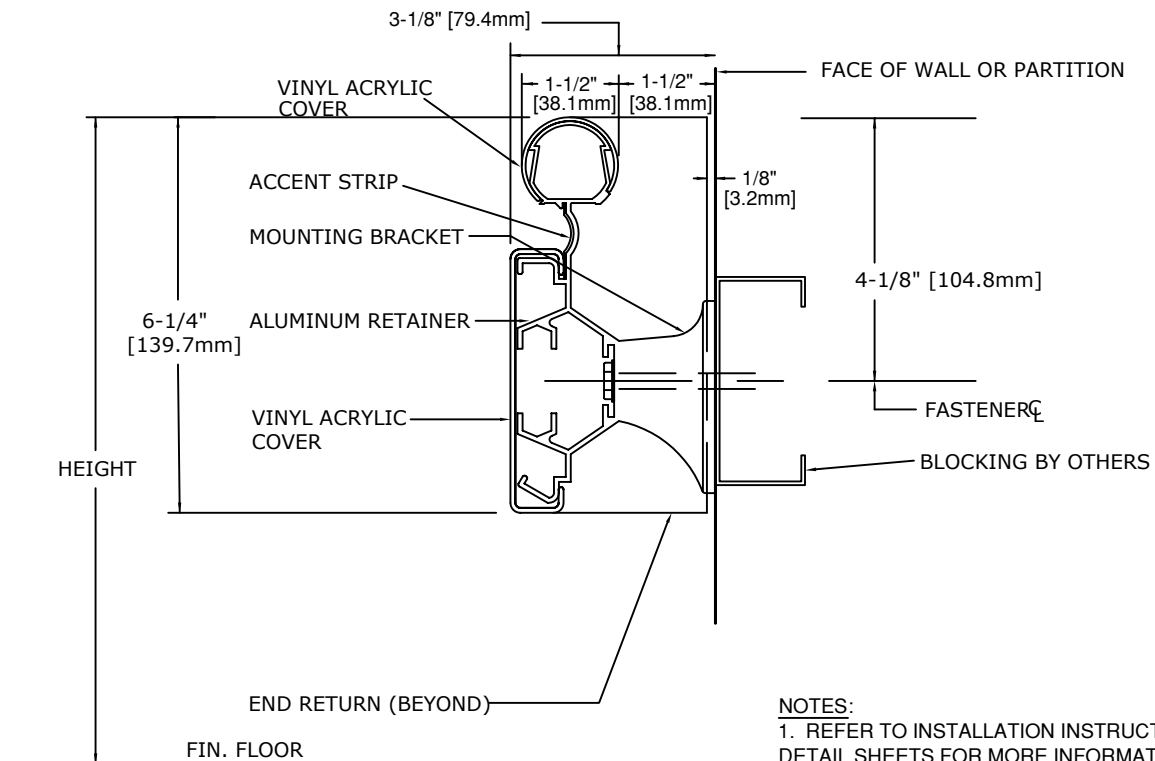


NOTE: LOCATE FASTENERS AND MOUNTING BRACKETS 6" O.C. MAX. FROM SPLICE JOINTS BETWEEN ABUTTING RETAINER SECTIONS, IF ANY.



151 FIFTH AVE. NW SUITE J ST. PAUL, MN 55112-3268
TOLL-FREE 800.521.1826 TEL 651.631.1607 FAX 651.631.0251

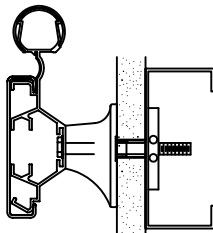
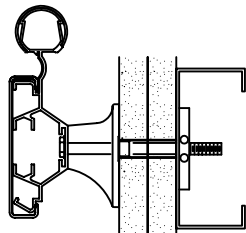
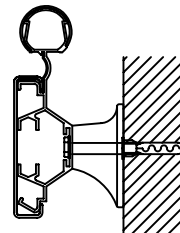
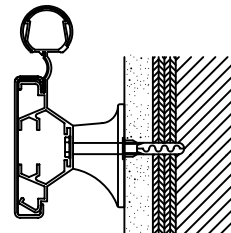
FASTENER HEIGHTS HRC-625



- NOTES:**
1. REFER TO INSTALLATION INSTRUCTIONS AND DETAIL SHEETS FOR MORE INFORMATION, INCLUDING PART NUMBERS.
 2. ON WALL OR PARTITION, MARK HEIGHT OF TOP OF RAIL (FROM FINISH FLOOR), THEN SUBTRACT DISTANCE FROM TOP OF RAIL TO FASTENER CENTERLINE.

IMPORTANT: USER SHALL VERIFY CONFORMANCE OF ALL CONSTRUCTIONS SHOWN WITH LOCAL CODES AND WITH REQUIREMENTS OF METAL STUD MANUFACTURER FOR RATINGS. FASTENERS AND PARTITION COMPONENTS NOT BY ARDEN ARCHITECTURAL SPECIALTIES, INC.

TYPICAL FASTENING CONDITIONS SHOWN BELOW

<p>1 LAYER GYP. BD.</p>  <p>1/4"-20 X 2-3/4" BOLT AND TYPE BB TOGGLER BY MECHANICAL PLASTICS</p>	<p>2 LAYERS GYP. BD.</p>  <p>1/4"-20 X 3-1/2" BOLT AND TYPE BB TOGGLER BY MECHANICAL PLASTICS</p>	<p>MASONRY</p>  <p>1/4" X 3" LAG SCREW AND TYPE AF6 ALLIGATOR ANCHORS BY MECHANICAL PLASTICS</p>	<p>GYP. BD. & MASONRY</p>  <p>1/4" X 3-1/2" LAG SCREW AND TYPE AF6 ALLIGATOR ANCHORS BY MECHANICAL PLASTICS</p>
---	--	--	--

SPECIFICATION:

GENERAL: FURNISH AND INSTALL HANDRAIL SYSTEM(S) BY ARDEN ARCHITECTURAL SPECIALTIES, INC., AS SHOWN AND SPECIFIED.

INSTALLATION: SECURE TO WALL OR PARTITION IN ACCORDANCE WITH MANUFACTURER'S PRINTED INSTRUCTIONS. USE FASTENERS DESIGNED AND APPROVED FOR PURPOSE INTENDED, SPACED 32 INCHES [812.8mm] O.C. MAX, UNLESS SPECIFIED OTHERWISE. INSTALL SYSTEM IN ACCORDANCE WITH ALL CODES HAVING JURISDICTION.



151 FIFTH AVE. NW SUITE J ST. PAUL, MN 55112-3268
TOLL-FREE 800.521.1826 TEL 651.631.1607 FAX 651.631.0251