

INSTALLATION INSTRUCTIONS HANDRAIL SYSTEM HRR-150

STORAGE, HANDLING & ENVIRONMENTAL CONDITIONS:

1. All materials shipped unassembled. Store vertically or on flat horizontal surface.
2. Begin installation only after finish construction has been completed and building interior has been within temperature range intended for continued use for at least twenty-four (24) hours. Cut vinyl and aluminum components to fit only after they have been at temperature intended for continued use for twenty-four (24) hours.

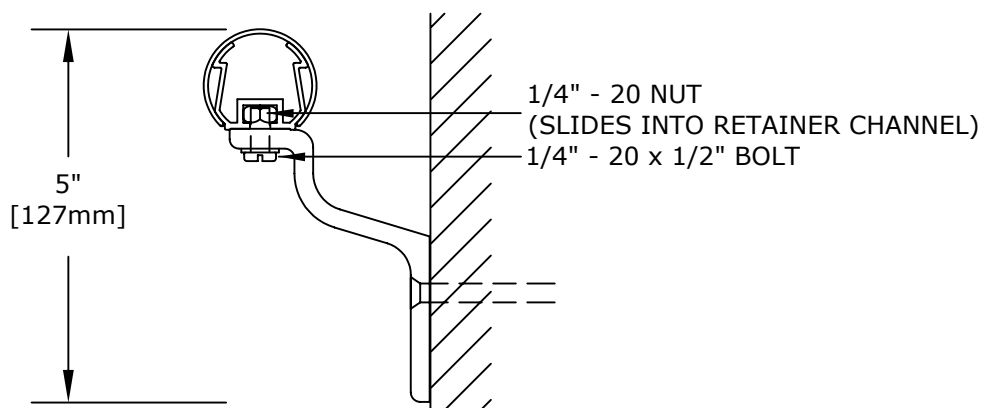
INSTALLATION:

1. Measure and mark height of top of handrail on wall or partition. Along wall or partition, 3-1/2" [88.9mm] below this mark, measure and mark horizontal centerline of fasteners that will attach mounting brackets to wall or partition.
2. Measure and mark retainer ends and joints between abutting retainer lengths, if any, on wall or partition, carefully allowing for corners and returns (see Standard Plan Detail). Use longest practical lengths to minimize number of joints.
3. Measure and mark fastener holes on wall or partition. Locate holes on fastener centerline 32" [812.8mm] O.C. max., unless otherwise specified, and at distances from retainer ends and butt joints as shown (see Standard Plan Detail). Joints between abutting retainer lengths must be centered on a mounting bracket. A minimum of two brackets must be used to support each retainer length.
4. Measure and cut retainer lengths. Carefully cut to achieve hairline joints between abutting lengths. Verify that cut lengths conform exactly with lengths marked on wall or partition.
5. Pre-drill fastener holes in wall or partition at locations marked. Make hole diameter as small as possible, per fastener manufacturer's printed recommendations. For most drywall applications, we recommend 1/4"-20 bolts and 1/4" size BB strap-type Toggler brand toggles by Mechanical Plastics. For most masonry applications, we recommend 1/4" lag screws and Toggler brand "alligator" anchors, size A6, by Mechanical Plastics.
6. Secure mounting brackets to wall or partition. Assemble fasteners, per fastener manufacturer's printed instructions. Insert them through pre-drilled holes in brackets and into holes in wall or partition. Secure per fastener manufacturer's printed instructions.
7. Assemble retainer lengths, corners and end returns. Attach one end of each corner to retainers that will meet at wall or partition corners. Attach end returns to all retainer ends that will end handrail system. Insert tabs on returns and corners into retainers, clamp into place, and secure with manufacturer-provided #8X1/2" sheet metal screws or 1/8" pop rivets at drill line.
8. Secure retainer assemblies to mounting brackets on wall or partition. Slide two factory-provided 1/4"-20 nuts per bracket into retainer channel. At splices, slide one nut into each adjoining retainer length. Lay retainer assembly onto brackets, and insert two factory-provided 1/4"-20X1/2" bolts up through underside of each bracket and into corresponding nuts in retainer channel. Screw all bolts into nuts to achieve loose connections before tightening. Slide retainer into finished position, secure all corners as needed, and tighten bolts to secure retainer assembly to brackets.
9. Install cover. Carefully locate cover joints so they are not directly over retainer splices, as this can create improper alignment of adjacent cover lengths. Measure and cut cover lengths to fit between returns and corners exactly. Use longest practical lengths to minimize number of joints. Do not align cover joints directly over aluminum retainer joints. Secure cover lengths to retainer by hooking over retainer top and snapping over retainer bottom. Make all joints neat and hairline tight. Gaps between adjacent cover lengths will be rejected.
10. Use mild detergent to clean soiled surfaces. Do not use powdered cleansers, as they may leave a residue embedded in cover surface.



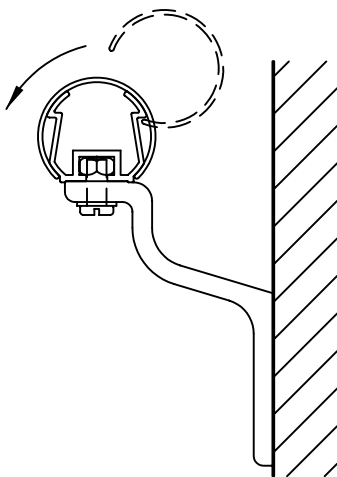
151 FIFTH AVE. NW SUITE J ST. PAUL, MN 55112-3268
TOLL-FREE 800.521.1826 TEL 651.631.1607 FAX 651.631.0251

PARTS LIST HRR-150



HRR-150

ALUMINUM RETAINER - #A015
VINYL ACRYLIC COVER - #V104
MOUNTING BRACKET - #A022
L.H. END RETURN - #HRR-150CLR
R.H. END RETURN - #HRR-150CRR
OUTSIDE CORNER - #HRR-150COS
INSIDE CORNER - #HRR-150CIS
ATTACHMENT BOLT - 1/4" - 20 x 1/2"
ATTACHMENT NUT - 1/4" - 20



COVER INSTALLATION

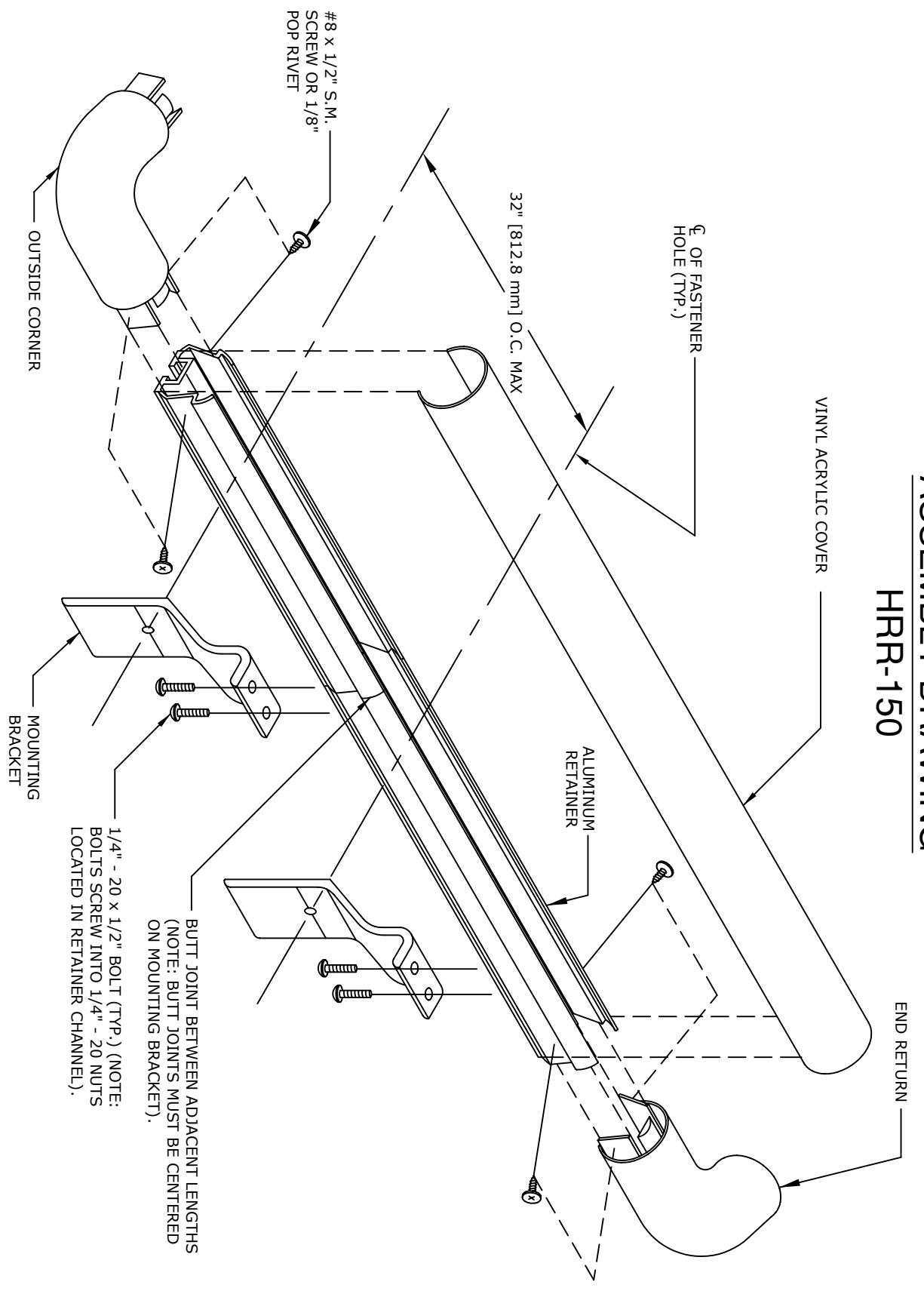
1. HOOK OVER RETAINER LEG.
2. ROTATE, PUSHING FIRMLY TO SNAP OVER OTHER RETAINER LEG.



Arden
Architectural
Specialties, Inc.™

151 FIFTH AVE. NW SUITE J ST. PAUL, MN 55112-3268
TOLL-FREE 800.521.1826 TEL 651.631.1607 FAX 651.631.0251

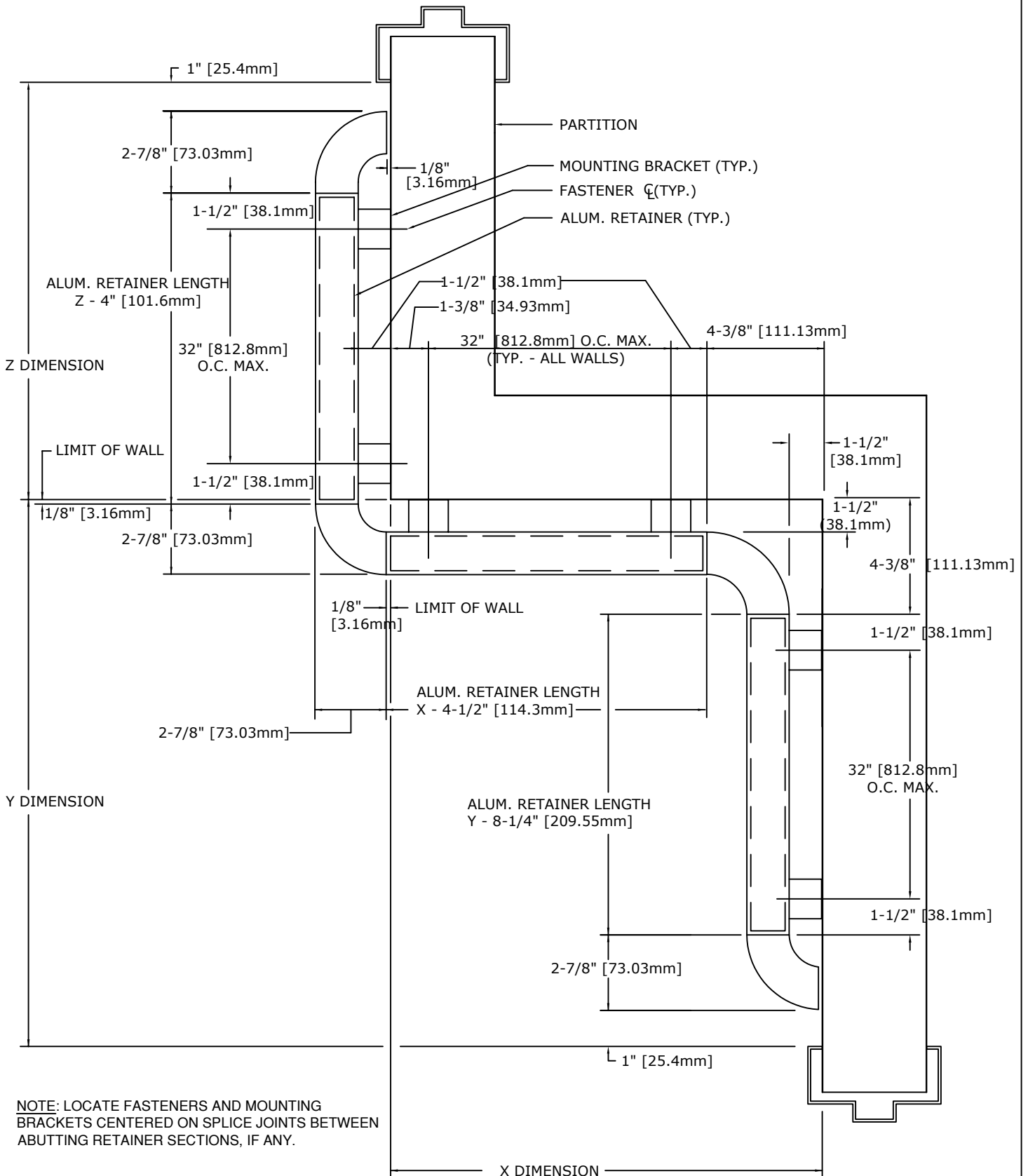
ASSEMBLY DRAWING HRR-150



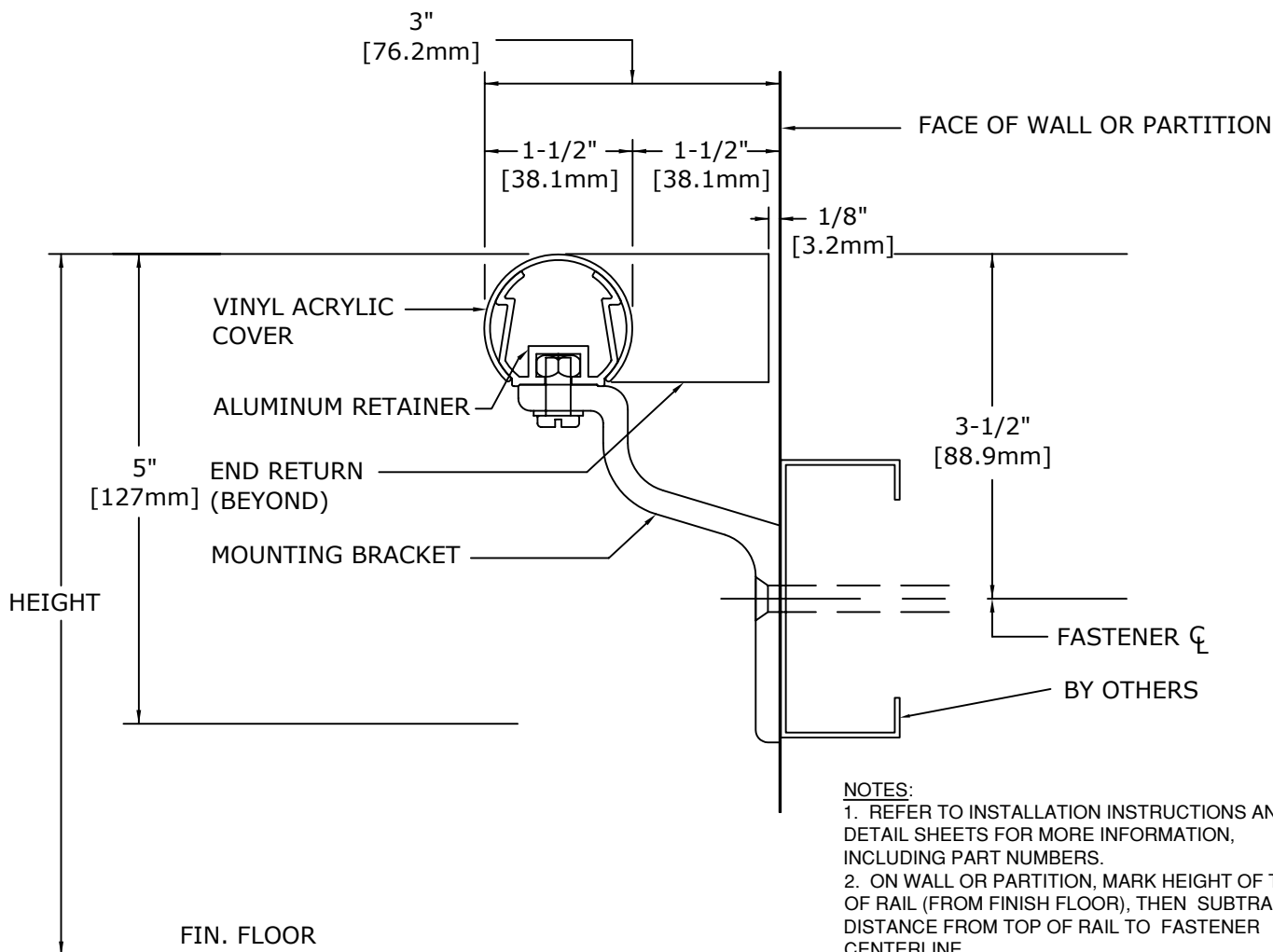
151 FIFTH AVE. NW SUITE J ST. PAUL, MN 55112-3268
TOLL-FREE 800.521.1826 TEL 651.631.1607 FAX 651.631.0251

STANDARD PLAN DETAIL

HRR-150



FASTENER HEIGHTS HRR-150



IMPORTANT: USER SHALL VERIFY CONFORMANCE OF ALL CONSTRUCTIONS SHOWN WITH LOCAL CODES AND WITH REQUIREMENTS OF METAL STUD MANUFACTURER FOR RATINGS. FASTENERS AND PARTITION COMPONENTS NOT BY ARDEN ARCHITECTURAL SPECIALTIES, INC.

TYPICAL FASTENING CONDITIONS SHOWN BELOW

<p>1 LAYER GYP. BD.</p> <p>1/4"-20 X 2-3/4" BOLT AND TYPE BB TOGGLER BY MECHANICAL PLASTICS</p> <p>QTY:</p>	<p>2 LAYERS GYP. BD.</p> <p>1/4"-20 X 2-3/4" BOLT AND TYPE BB TOGGLER BY MECHANICAL PLASTICS</p> <p>QTY:</p>	<p>MASONRY</p> <p>1/4" X 2" LAG SCREW AND TYPE AF6 ALLIGATOR ANCHORS BY MECHANICAL PLASTICS</p> <p>QTY:</p>	<p>GYP. BD. & MASONRY</p> <p>1/4" X 2" LAG SCREW AND TYPE AF6 ALLIGATOR ANCHORS BY MECHANICAL PLASTICS</p> <p>QTY:</p>
---	--	---	--

SPECIFICATION:

GENERAL: FURNISH AND INSTALL HANDRAIL SYSTEM(S) BY ARDEN ARCHITECTURAL SPECIALTIES, INC., AS SHOWN AND SPECIFIED.
INSTALLATION: SECURE TO WALL OR PARTITION IN ACCORDANCE WITH MANUFACTURER'S PRINTED INSTRUCTIONS. USE FASTENERS DESIGNED AND APPROVED FOR PURPOSE INTENDED, SPACED 32 INCHES [812.8mm] O.C. MAX, UNLESS SPECIFIED OTHERWISE. INSTALL SYSTEM IN ACCORDANCE WITH ALL CODES HAVING JURISDICTION.



151 FIFTH AVE. NW SUITE J ST. PAUL, MN 55112-3268
 TOLL-FREE 800.521.1826 TEL 651.631.1607 FAX 651.631.0251